

*Line and Lure*



\*\*\*\*\*  
**Line and Lure Editors:** Connie Austin, Ule James, Claire Redell

Send or call in news items to: Ule James, 1905 Alton Drive, Champaign  
IL, 61821  
(217-352-7136)

One-year subscription to the Line and Lure will be \$12.00 (Free newsletter to each member club). The racing secretary for each club will get the club copy so please circulate it to be fair. Each club gets its own newsletter but if you as an individual want a copy please send subscription requests to Ule James: See address above. Please make checks out to Ule James. There will be a \$2.00 charge per back issue in 1992.

Newsletter will be published monthly from May to October and every other month from November to April. We will try to have the newsletter out mid-month (or sooner) depending on when we get race results.

Newsletter classified advertising and Boasts and Brags:

\*\*48 words \$ 2.00  
each additional 12 words \$ .50

Space permitting full page \$10.00  
half page 5.00

Classified advertising and Boasts and Brags will be run when space is available. Please make checks out to Ule James.

The CWA and the Line and Lure take no responsibility for statements or claims made in the advertisements that appear in this publication.

\*\*\*\*\*  
CWA Board of Directors for 1992

Dave Henry President  
Kathy Lukitsch Vice-president  
Mary Beth Arthur Registrar  
Doug Arthur Secretary  
Lou Ann Almquist Treasurer

Connie Austin Director  
Mary Huff Director  
Ulysses James Director  
Claire Redell Director  
Chad Ward Director

\*\*\*\*\*

## 1992 CWA Schedule of Events

Aug 8	Fort Hamilton Whippet Association	Joyce Park, OH
Aug 9	Fort Hamilton Whippet Association	Joyce Park, OH
Sep 5	Badgerland Whippet Club	Arthur's Acres, WI
Sep 6	Dairyland Whippet Club	Arthur's Acres, WI
Sep 19	Fort Hamilton Whippet Association	Joyce Park, OH
Sep 20	Fort Hamilton Whippet Association	Joyce Park, OH

\*\*\*\*\*

The address and phone number for the editor will change for August and September, and is:

1891 County Rd 1600 E RR2 Box 401  
Urbana, Illinois 61801  
217-384-5820

\*\*\*\*\*

### Roving Reporter Dates

Aug 8,9: Lou Ann & Mary Huff  
Sept 5,6: Dave and Nancy  
Sept 19,20: Rob and Brenda

Haven't got any pet profiles yet but I'm sure I will soon, and can put them in the newsletter!! Hint, hint.

\*\*\*\*\*

Update on cryptorchidism in dogs from the Cornell Animal Health Newsletter

Testes descend to the scrotum at 10 days of age and the hormonal influence on this descent of the testicles is unknown. This is why giving testosterone to lower testicles may actually not be doing anything. It is hard to know once the testosterone is given whether the testicles would have come down on their own anyway. Testicles can usually be felt in the scrotum at 8 weeks of age, although it can take as long as four to six months of age. If they are not down by one year, they probably will never get there.

Cryptorchidism (either unilateral or bilateral) occurs in 10 to 13% of male dogs presented to vet clinics. Evidence for a genetic base for cryptorchidism is that it is more common in some breeds than others, and within breeds is more common in some lines. Also, it can be increased by selecting affected or carrier animals as parents, and can be decreased by eliminating affected or carrier animals from the breeding population. It is probably due to a sex-limited autosomal recessive model (remember that biology??) with only homozygous males (those with two "bad" copies of the gene) becoming cryptorchid while heterozygous males (only one "bad" copy of the gene) are carriers, and homozygous or heterozygous females are carriers. Both parents of affected dogs should be considered to be carriers, and if it is desired to decrease this trait carriers should be removed from the breeding pool.

\*\*\*\*\*

## Dairyland Kennel Visit

This is a report of the tour 18 of us took Friday, July 3, 1992, of the A.M. Trello Greyhound kennel (presently the 7th ranked kennel) at the Dairyland Greyhound track in Kenosha, Wisconsin. All the kennels (20 in all) are kept within a fenced and secured area. Bud Trello had to notify the guard station of everyone's name on the tour. Entering the kennel area required signing in and receiving name badges.

The kennel building, constructed of concrete block, is heated and air conditioned. One enters the kennel building through the kitchen/work area. Directly to your right is a bathtub full of thawing beef containers. Straight ahead is the whirlpool tub used for treating injured Greyhounds. To the left is the kitchen work area, complete with closed circuit TV to watch the races as they are run, or a baseball game instead. The attached large room houses the Greyhounds in large, roomy individual cages. Hanging on the top of the individual cages is each Greyhound's kennel muzzle. The bedding material used in the cage is shredded paper. The kennel can house up to 60 Greyhounds. That figures out 1200 (60 x 60) Greyhounds kenneled at the Dairyland track. Attached to the kennel building are four large turnout areas (two of which are covered and enclosed for winter) with a sand bottom. All the Greyhounds are turned out of their cages several times a day starting at 6:00 am. The females are in one turnout area, the males in another. They are fed once a day--in the morning. In the afternoon their bedding is cleaned and shaken free of any sand that may have been tracked in.

According to the kennel manager, Bill Scott, the dogs are fed carefully weighed out portions of 40% raw beef, 60% Purina High Protein dry food, Vitamins C and E, plus a multi-vitamin supplement. Seldom do they add vegetables. They do get dog biscuits or Bonz's for a treat, plus boiled soupbones as a treat.

Greyhounds racing that day are taken to a "lock-out" kennel where they are weighed one hour prior to the first race. Variations of 1 1/2 pounds from a Greyhound's established weight will result in a dog being scratched.

The Greyhounds all looked in superb condition, with shiny smooth coats, clear eyes and firm bodies. It is obvious these athletes received the best of care. Most were very outgoing and glad to see our group of 18 visitors. Several were shy and retiring, but they were the exception. Very few of the dogs had any blemishes or scars.

According to Bill, the post-race routine has each runner receiving a liniment rub down for soreness. The following day, the dog receives a careful examination for injuries plus a grooming. Injuries are treated with a combination of whirlpool, ultrasound, DMSO and similar techniques. If a dog receives a serious injury while racing, the track veterinarian will stabilize the injury. It is then the kennel owners responsibility to get treatment for the Greyhound. The Trello kennel has a veterinarian on 24 hour call, who makes two weekly visits. They even bring in X-ray equipment if needed!

The Wisconsin Racing Board has a zero tolerance for any foreign substances in the Greyhound. All Greyhounds are urine tested after each race. Heavy fines and suspensions, plus purse losses are levied for anything foreign, including aspirin, DMSO, Ivermectin, etc. showing up in a dog's urine.

We had many questions for both Bill Scott and Bud Trello. Both were very informative and cordial. They had no reservations about us opening the cages and petting the expensive canine athletes.

After the kennel tour, we went to Dairyland Greyhound track for an afternoon at the races. We had a great time watching the dogs race.

Our thanks to the Holly and Bud Trello for so graciously allowing our large group into their kennel, for being so willing to talk with us and being so generous. If all goes well, we hope to get another opportunity to visit in September.

P.S. Wicked Speed and littermate Party Mix finished 2nd and 3rd in a major stakes race July 4 at the Raynham Taunton Greyhound track in Massachusetts! Congratulations to the Trellos.

Reported by Mary Beth Arthur

\*\*\*\*\*  
Race meet summaries for July will be published in the next newsletter  
\*\*\*\*\*  
Boasts, Brags and BLOOPERS

#### From Connie & Ule

Another flyball tournament in Minnesota in June. The team only placed fifth out of seven teams. The Michigan tournament in July didn't turn out much better, our four breed team was slaughtered and came in 4th out of 4, our very slow team came in 3rd out of 4th and our championship team, which was missing one border collie, and instead had Charlie and Radar, an amalgamated panhandle hound, came in 9th out of 15. The fastest team in the tournament, also in the championship division, Border Patrol (they breed border collies specifically for flyball), was making times of 17.9, the world record is 17.8, and we were making times of 22-24 seconds. On the slow team, Mighty Mite did get 2 points towards his flyball dog title. Our whippets are getting a reputation for being dangerous, as I was sitting down, Ule let Charlie run at me, a friend said, "Connie, here comes Charlie", I turned my head, and 33 pounds of Charlie hit me in the nose, blood started spurting out, I think I lost a pint of blood, so now Charlie is nose buster, and Mighty Mite is bone crusher.



Some Fourth of July dressing up, don't the dogs just love it when we do this to them!!! Just picture everything in red, white and blue and you'll get the picture.



# Continental Whippet Alliance Race Results

Gopher State Whippet Racing Group  
July 4, 1992  
Milwaukee, Wisconsin  
Race conditions: Warm with breeze blowing

## RACE RESULTS

Number Competing    Adults    16       Puppies    1

Final Place-ments	Starting Grade	Dog's Name and Title	Owner's Name	Race meet points	ARX points	NARX points
<b>ADULTS</b>						
1.	A	Marial's Reata <i>Saltwater</i> ARX	Arthur/Strauss	29		3
2.	B	Marial's Swiftsure <i>Finale</i> TRP	Arthur/Strauss	19	3	2
3.	A	Marial's Palmeridge <i>Princeton</i> CD FbCH JC ARX	Austin/James	18.5		1
4.	B	Marial's Palmeridge <i>Pepperdine</i>	Wegner's	15.5	2	
5.	B	Marial's <i>Hotwater</i> of Wyndsor	Wegner's	14	1	
6.	B	Marial's Reata <i>Firewater</i> TRP	Arthur/Strauss	13		
7.	A	Marial's Palmeridge <i>Cornell</i> TD JC ARX	Austin/James	12.5		
8.	C	Ch. Shamasan Knock on <i>Wood</i>	Wegner's	11.5		
9.	D/FTE	Palmeridge <i>Manitou</i>	Siehndel	11		
10.	A	Marial's Palmeridge <i>Auburn</i> CD TRP	Wittman	10		
11.	B	Marial's Palmeridge <i>Dakota</i> TRP	Redell	7		
12.	D	Finghin <i>Black Moon</i> Rising LCM	Owen	7		
13.	D	Proverbial Sugar-N- <i>Spice</i>	Randall	6 (SCR)		
14.	B	Marial's Palmeridge <i>Paris</i>	Ellen	3 (SCR)		
15.	D /FTE	Marial's <i>Marseilles</i>	Siehndel/Arthur	0 (SCR)		
16.	D/FTE	Willabe's Red <i>Poppy</i>	Mutchie's	0 (SCR)		
<b>PUPPIES</b>						
1.	FTE	Willabe's Scampering <i>Red Beauty</i>	Mutchie's	15		

CONFORMATION RESULTS: Judge: LouAnn Almquist

Eligibility	Whippet's Name	Place
HS A	Marial's Reata <i>Saltwater</i> ARX	1
2nd HS A	Marial's Palmeridge <i>Princeton</i> CD FbCH JC ARX	
BOS	Marial's Swiftsure <i>Finale</i> TRP	4
2nd HS B	Marial's Palmeridge <i>Pepperdine</i>	2
HS C	Ch. Shamasan Knock on <i>Wood</i>	3
HS D	Marial's <i>Manitou</i>	
2nd HS D	Finghin <i>Black Moon</i> Rising	
Puppy	Willabe's Scampering <i>Beauty</i>	

(order listed is 1st thru last place, race by race)

<b>PROGRAM 1</b>
Pup: <i>Beauty</i>
D: Time: 12:76 <i>Manitou</i> , <i>Spice</i> , <i>Black Moon</i> , <i>Poppy</i> , <i>Marseilles</i>
C Time: 12:61 <i>Wood</i>
B: Time: 12:26 <i>Finale</i> , <i>Hotwater</i> , <i>Pepperdine</i> , <i>Firewater</i> , <i>Paris</i> , <i>Dakota</i>
A: Time: 11:8 <i>Saltwater</i> , <i>Princeton</i> , <i>Cornell</i> , <i>Auburn</i>
<b>Program 2</b>
Pup: <i>Beauty</i>
Race 1 Time: 12:4 <i>Firewater</i> , <i>Paris</i> (SCR), <i>Dakota</i> , <i>Marseilles</i> (SCR), <i>Poppy</i>
Race 2 Time: 12:3 <i>Pepperdine</i> , <i>Hotwater</i> , <i>Auburn</i> , <i>Spice</i> , <i>Black Moon</i>
Race 3 Time: 11:7 <i>Saltwater</i> , <i>Finale</i> , <i>Princeton</i> , <i>Cornell</i> , <i>Wood</i> , <i>Manitou</i>
<b>Program 3</b>
Pup: <i>Beauty</i>
Race 1: Time: 13:21 <i>Dakota</i> , <i>Spice</i> (SCR), <i>Black Moon</i> , <i>Poppy</i> (SCR)
Race 2: Time: 12:16 <i>Hotwater</i> , <i>Firewater</i> , <i>Auburn</i> , <i>Manitou</i>
Race 3: Time: 11:85 <i>Saltwater</i> , <i>Princeton</i> , <i>Finale</i> , <i>Cornell</i> & <i>Pepper</i> (TIED), <i>Wood</i>
<b>Program 4</b>
Race 1: Time 12:95 <i>Manitou</i> , <i>Black Moon</i>
Race 2 Time: 12:53 <i>Firewater</i> , <i>Wood</i> , <i>Auburn</i> , <i>Dakota</i>
Race 3 Time: 11:83 <i>Saltwater</i> , <i>Finale</i> , <i>Pepperdine</i> , <i>Princeton</i> , <i>Hotwater</i> , <i>Cornell</i>

# Continental Whippet Alliance Race Results

Gopher State Whippet Racing Group  
July 5, 1992  
Milwaukee, Wisconsin  
Race conditions: Warm with breeze blowing

RACE RESULTS  
Number Competing Adults 14 Puppies 1

(order listed is 1st thru last place, race by race)

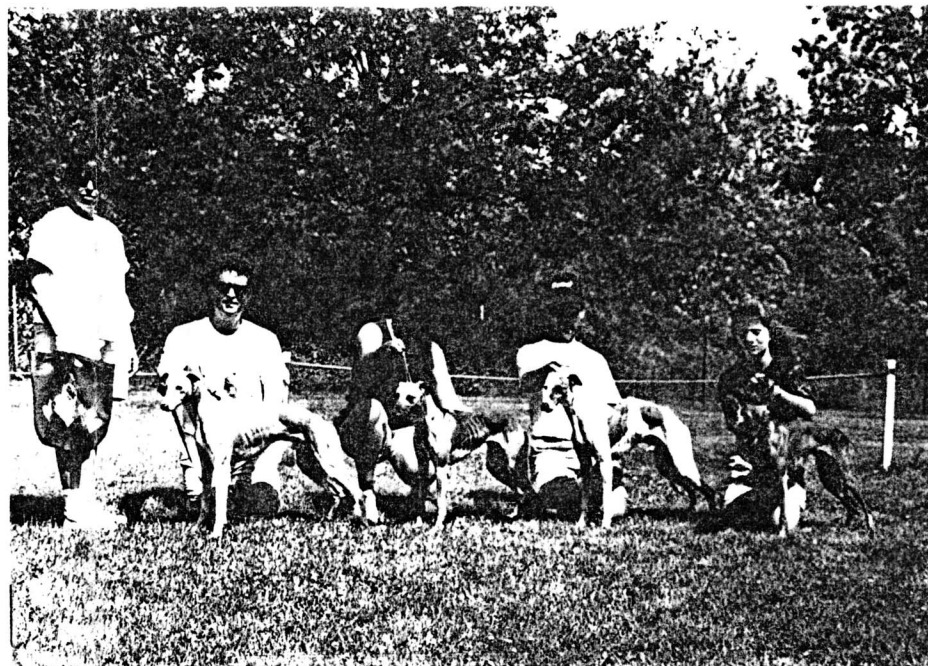
Final Place-- ments	Starting Grade	Dog's Name and Title	Owner's Name	Race meet points	ARX points	NARX points
ADULTS						
1.	A	Ch. Marial's Palmeridge <i>Brandeis</i> DPC	Almquist/Arthur	27		3
2.	B	Marial's Swiftsure <i>Finale</i> TRP	Arthur/Strauss	18.5	3	2
3.	D/FTE	Marial's Palmeridge <i>Harvard</i>	Arthur/Strauss	18	2	.5
3.	A	Marial's Palmeridge <i>Princeton</i> CD FbCH JC ARX	Austin/James	18		.5
5.	A	Marial's Palmeridge <i>Cornell</i> TD JC ARX	Austin/James	17		
6.	B	Marial's Palmeridge <i>Pepperdine</i>	Wegner's	14	1	
7.	B	Marial's <i>Hotwater</i> of Wyndsor	Wegner's	13.5		
8.	B	Marial's Reala <i>Firewater</i> TRP	Arthur/Strauss	12		
9.	C	Ch. Shamasan Knock on <i>Wood</i>	Wegner's	7		
10.	B	Marial's Palmeridge <i>Dakota</i> TRP	Redell	6		
10.	D/FTE	Palmeridge <i>Manitou</i>	Siehdell	6		
12.	A	Marial's Palmeridge <i>Auburn</i> CD TRP	Wittman	3 (SCR)		
12.	D	Finghin <i>Black Moon</i> Rising LCM	Owen	3 (SCR)		
14.	D /FTE	Marial's <i>Marseilles</i>	Siehdell/Arthur	3 (SCR)		
PUPPIES						
1.	FTE	Swiftsure's Loose in the <i>Jungle</i>	Huff	15		

CONFORMATION RESULTS: Judge: LouAnn Almquist

Eligibility	Whippet's Name	Place
HS A	Ch. Marial's Palmeridge Brandeis	
2nd HS A	Marial's Palmeridge Princeton CD FbCH JC ARX	4
HS B	Marial's Swiftsure Finale TRP	2
2nd HS B	Marial's Palmeridge Pepperdine	1
HS C	Marial's Palmeridge Dakota TRP	
2nd HS C	Finghin's Black Moon Rising	
HS D	Marial's Palmeridge Harvard	
Puppy	Swiftsure's Loose in the Jungle	3

PROGRAM 1
Pup: Jungle
D: Time: 12:3 Harvard, Marseilles (SCR)
C Time: 13:38 Dakota, Black Moon
B: Time: 12:9 Hotwater, Wood, Manitou
B: Time: 12:75 Finale, Firewater, Pepperdine, Auburn (SCR)
A: Time: Brandeis, Princeton, Cornell
Program 2
Pup: Time: 10:43 Jungle
Race 1 Time: 12:63 Pepperdine, Auburn, Manitou, Black Moon
Race 2 Harvard, Firewater, Wood
Race 3 Brandeis, Princeton, Finale, Cornell, Hotwater, Dakota
Program 3
Pup: Time: 10:53 Jungle
Race 1: Hotwater, Firewater, Manitou, Dakota, Black Moon (SCR)
Race 2: Finale, Brandeis, Cornell, Princeton, Harvard, Pepperdine
Program 4
Race 1 Pepperdine, Firewater, Manitou, Dakota, Wood
Race 2 Brandeis, Harvard & Princeton & Cornell (T), Finale, Hotwater

CONFORMATION SUMMARY SHEET							
RTG	Dog's Name	Owner	1st	2nd	3rd	4th	NTE TOT
1	Marial's Palmeridge Pepperdine	Wegner	3	1			4 18
2	Marial's Reata Saltwater ARX	Arthur/Strauss	2	2	1		5 15
3	Marial's Hotwater of Windsor	Wegner		2	1		4 8
4	Marial's Swiftsure Flnale TRP	Arthur/Strauss		1	1	1	4 6
5	Blaz-N Karefree Kender	Hadley/Johnstone	1				1 5
6	Slades Bouncing Blu Bubbles	Henry			1	1	2 3
6	Delacreme Belle Coccinella TT TRP	Curik		1			1 3
6	Ch. Shamasan Knock on Wood CD	Wegner			1	1	1 3
9	Marial's Palmeridge Princeton CD FdCH JC AR	Austin/James				2	3 2
9	Swiftsure's Loose in the Hungle	Huff			1		1 2
11	Whealland Prairie Schooner	Hadley					1 1
	Readers King Crown of Slade	Henry					1 0
	Readers Driving Miss Daisy	Ward					1 0
	Palmeridge Duke	Corner					1 0
	Marial's Palmeridge Calais CD TT	Curik					1 0
	Marial's Palmeridge Dakota TRP	Redell					3 0
	Marial's Palmeridge Cornell TD JC ARX	Austin/James					3 0
	Marial's Manitou	Siehnadel					1 0
	Finghin Black Moon Rising LCM	Owen					2 0
	Willabe's Scampering Beauty	Mutchie's					1 0
	Marial's Palmeridge Harvard	Arthur/Strauss					1 0
	Ch. Marial's Palmeridge Brandeis DPC	Almquist/Arthur					1 0
Terms							
NTE - number times qualifying for conformation							
TOTPT - total points for all conformation events							
(5 pts for first, 3 points for second,							
2 pts for third, and 1 point for fourth)							
RTG - Rating based on TOTPT							



From left to right on July 4, 1992: Lou Ann Almquist judging. Doug with Saltwater, Gail with Pepperdine, Dean with Wood and Samantha with Finale



From left to right on July 5, 1992: Gail with Pepperdine, Finale, Mary with Jungle and Ule with Princeton

RACE SUMMARY SHEET																	
						LAST MEET				2ND LAST MEET			3RD LAST MEET			AVG	NEWG
RTG	Dog's Name	Owner	SG	ARX	NARX	TRP	LOC	PL	PTS	LOC	PL	PTS	LOC	PL	PTS		
Adults																	
1	Marial's Reata Saltwater ARX	Arthur/Strauss	A	12.00	46.5	11	WI	1	29	OH	1	29	OH	1	29	29.00	A
2	Ch. Marial's Palmeridge Brandeis ARX	Almquist/Arthur	A	13.00	21	10	WI	1	27	IL	2	23	IL	2	21	23.67	A
3	Marial's Palmeridge Princeton CD FbCh JC ARX	Austin/James	A	13.00	24.5	11	WI	3(TIED)	18	WI	3	18.5	OH	3	19	18.50	A
4	Marial's Palmeridge Harvard	Arthur/Strauss	D	2.00	0.5	1	WI	3	18							18.00	A
5	Marials' Palmeridge Cornell TD JC	Austin/James	A	17.50	10	8	WI	5	17	WI	7	12.5	OH	2	21	16.83	A
6	Reader's King Crown of Slade	Henry	D	6.00	1	2	OH	3(TIED)	17	OH	4	15.5				16.25	A
7	Slades Bugle Boy Blu	Henry	A	3.00	1	6	OH	7	13	OH	3	17.5	OH	3	17.5	16.00	A
8	Marial's Swiftsure Finale TRP	Arthur/Strauss	B	11.00	7	10	WI	2	18.5	WI	2	19	OH	12(TIED)	8	15.17	A
9	Swiftsure Luke's Jayson, ARM, ORC	Lukitsch	B	1.50		8	WI	5 (TIED)	14	WI	4	15	WI	6	14.5	14.50	B
10	Marial's Palmeridge Pepperdine	Wegner	B	3.50		7	WI	6	14	WI	4	15.5	WI	5(TIED)	15	14.00	B
11	Palmeridge Duke	Corner	A	5.00	1	8	OH	6	14	OH	11	10	OH	3	17.5	13.83	B
12	Marial's Palmeridge Auburn CD TRP	Wittmann	A	11.50	1	10	WI	10	10	WI	9	12	IL	3	17.5	13.17	B
13	Marial's Hotwater of Wyndsor	Wegner/Arthur	B	3.00		5	OH	7	13.5	WI	5	14	WI	8(TIED)	11	12.83	B
14	Marial's Palmeridge Calais TT CD	Curik	D			2	WI	5(TIED)	15	WI	7	10.5				12.75	B
15	Marial's Reata Firewater TRP	Arthur/Strauss	B	6.50	1.5	12	WI	8	12	WI	6	13	OH	9(TIED)	11	12.00	B
16	Blaz N Carefree Kender	Hadley	D	2.00		2	OH	7(TIED)	12	OH	5	12				12.00	B
17	Wheatland Prairie's Schooner	Hadley	D			1	OH	9	11.5							11.50	B
18	Marial's Palmeridge Paris	Arthur/Strauss	B			4	OH	7(TIED)	13	WI	9	11	WI	7	10	11.33	B
19	Slades Muddie Water, ARM	Corner	B			3	OH	12(TIED)	8	OH	10	10	OH	8(TIED)	12	10.00	B
20	Ch. Shamasan Knock on Wood	Wegner	C			5	WI	9	7	WI	8	11.5		12(TIED)	10	9.25	C
21	Slades Ole Black Magic	DeMorest	C			3	OH	11	8	OH	10(TIED)	11	OH	11(TIED)	8	9.00	C
22	Luke's Palmeridge LeMans	Lukitsch	C			6	WI	7	11.5	WI	10	4	WI	9 (TIED)	10	8.50	C
23	Palmeridge Manitou	Schndel	D			2	WI	11	6	WI	9	11				8.50	C
24	Marial's Palmeridge Dakota TRP	Redell	B			10	WI	10	6	WI	11(TIED)	7	WI	10	11	8.00	C
25	Fox Run's Jockey	Sparks	D			1	OH	12	8							8.00	C
26	Blaz N Kiwi Kate	Hadley	C			1	OH	11	8							8.00	C
27	Finghin's Black Moon Rising	Owen	D			1	WI	11(TIED)	7							7.00	C
28	Slades Bouncing Blu Bubbles	Henry	C			5	OH	12	7	OH	13	8	OH	9	5	6.67	C
29	Delacreme Belle Coccinelle TT TRP	Curik	D			11	WI	9	6	WI	15	2	IL	9	3	3.67	D
30	Proverbial Sugar N Spice	Randall	C			3	WI	13	0	WI	11	3	IL	12(TIED)	7	3.33	D
31	Reader's Driving Miss Daisy	Ward	D			2	OH	14(TIED)	3	OH	17	3				3.00	D
32	Blaz N Classic Cameo		D			1	OH	18(TIED)	2							2.00	D
33	Coggeshall's Emissary	Huff	C			3	WI	12	4	WI	12	0	WI	12	0	1.33	D
34	Sundance Thats Jason	Ward	D			1	OH	15	0							0.00	D
35	Reader's Wind in the Willow	Ward	D														
	Puppies																
1	Willabe's Scampering Beauty	Mutchie				1	WI	15									
1	Swiftsure's Loose in the Jungle	Huff				1	WI	15									
Terms																	
RTG=rating based on pls in last 3 meets																	
SG=starting grade on last meet completed																	
PL=placement in meet																	
PTS=pts acquired in meet																	
AVG=avg of last 3 meets (or less if nec)																	
NEWG=starting grade for next meet																	



Ule thought of the cartoon when someone asked why they don't use greyhounds for seeing eye dogs, the thought just brought some chuckles.





Line and Lure

Connie Austin & Ule James  
1905 Alton Drive  
Champaign, Illinois 61821

