

Line and Lure



Line and Lure Editors: Connie Austin, Ule James,
Claire Redell

Send or call in news items to: Ule James, 1905 Alton Drive, Champaign
IL, 61821
(217-352-7136)

One-year subscription to the Line and Lure will be \$12.00 (Free newsletter to each member club). The racing secretary for each club will get the club copy so please circulate it to be fair. Each club gets its own newsletter but if you as an individual want a copy please send subscription requests to Ule James: See address above. Please make checks out to Ule James. There will be a \$2.00 charge per back issue in 1992.

Newsletter will be published monthly from May to October and every other month from November to April. We will try to have the newsletter out mid-month (or sooner) depending on when we get race results.

Newsletter classified advertising and Boasts and Brags:

**48 words \$ 2.00
each additional 12 words \$.50

Space permitting full page \$10.00
half page 5.00

Classified advertising and Boasts and Brags will be run when space is available. Please make checks out to Ule James.

The CWA and the Line and Lure take no responsibility for statements or claims made in the advertisements that appear in this publication.

CWA Board of Directors for 1992

Dave Henry	President
Kathy Lukitsch	Vice-president
Mary Beth Arthur	Registrar
Doug Arthur	Secretary
Lou Ann Almquist	Treasurer

Connie Austin	Director
Mary Huff	Director
Ulysses James	Director
Claire Redell	Director
Chad Ward	Director

 1992 CWA Schedule of Events

May 9 CANCELLED	C-U Racing	Danville, IL
May10 CANCELLED	C-U Racing	Danville, IL

May 23	Dairyland Whippet Club	Arthur's Acres. WI
May 24	Badgerland Whippet Club	Arthur's Acres, WI
June 13	Fort Hamilton Whippet Association	Joyce Park, OH
June 14	Fort Hamilton Whippet Association	Joyce Park, OH
July 4	Gopher State Whippet Racing Group	Arthur's Acres, WI
July 5	Gopher State Whippet Racing Group	Arthur's Acres, WI
Aug 8	Fort Hamilton Whippet Association	Joyce Park, OH
Aug 9	Fort Hamilton Whippet Association	Joyce Park, OH
Sep 5	Badgerland Whippet Club	Arthur's Acres, WI
Sep 6	Dairyland Whippet Club	Arthur's Acres, WI
Sep 19	Fort Hamilton Whippet Association	Joyce Park, OH
Sep 20	Fort Hamilton Whippet Association	Joyce Park, OH

Thanks to subscribers who renewed their subscription:

Jean Balint, Linda Buchholz, Mr & Mrs. Strauss, Mr & Mrs. Henry

Last call for those individuals who need to renew and haven't. This will be your last edition unless you renew:

Erin Campbell	Ted Kelly	Sharon & Bill McCollum
---------------	-----------	------------------------

Mary & Jack Lewis	C Curik & L Wittman	Claire Redell
-------------------	---------------------	---------------

I will assume the race secretaries are still MB & D Arthur, Mary Huff, R&B Corner, and K. Lukitsch and keep sending them the newsletter.

Upcoming race meet information

****Judge profile**

Holly Trello who will be judging at the memorial day cluster is the head of the adopt-a-greyhound program at Dairyland Park in Kenosha, Wisconsin. She has owned whippets, salukis and greyhounds bred for racing. Her kennel is called Topflight Farm, and she is planning on continuing to develop top-line greyhounds.

 National Specialty

Several CWA members and Line and Lure subscribers were seen at the Whippet National Specialty in Maryland. Gail was seen with Pepper, the ferocious guard dog who protected the entire specialty from a mysterious figure in a black raincoat; Mary Beth was seen judging the endless Sweeps and the junior showmanship, and enjoying herself at board meetings; Connie and Ule were seen having "fun" in the obedience ring; Jean Balint was seen counting the endless number of ballots for the board results; and Linda Buchholz was seen spontaneously purchasing a whippet puppy.

We have a new column starting called pet profiles. We want to encourage everyone to send in information on as many of their whippets as they want to. The idea is to give everyone an idea of the dog's personality with the following types of information (plus any additional information you want):

Name
Birthdate
Sire and dam
Breeder(s)
Owner(s)
Call Name
Color
Height and Weight
Diet/feeding
Exercise and training
Accomplishments
Personality
Favorite toy
Preferred/Least liked activity
Idiosyncrasies
Favorite/least favorite phrase(s)
Pet gripe
Best Christmas present
Favorite Food
Favorite Trip
What I miss the most
How did you pick your dog
The first night/ride home
+/- Picture in favorite pose

Please send information to Claire Redell or give information to Claire or Connie at a race meet, if you want to weave a story that's fine, if not just list items. We'll put them in the newsletter, maybe one to two a month depending on space. Don't be shy!! It can be serious or not so serious.

An example for this month:

PET PROFILE:

Marial Palmeridge Cornell
(Ch. Dixieland Dandi Duke x Marial's Nekoosa)
Mighty Mite (Might)

Least favorite phrase(s)

These phrases are usually uttered by passerbyers who don't think I understand what they are saying

Is that a greyhound?

Boy those dogs are skinny!

Favorite toy or rawhide

Whatever toy or rawhide Charlie (that other dog) has

Favorite food

My very favorite food is liverwurst which I seem to find on a regular basis in these gloves out in the middle of a field, I guess that's where it grows, but you have to do a lot of work to find it.

Favorite trips

My favorite trips are family outings, out to the park to walk, or to the flyball practices, and of course out bunny chasing.

Least favorite activities/major gripes

This is what gets me, I mean these humans expect me to take this dumbbell thing in my mouth and hold it, you never catch them doing something so silly, I mean really, what's the point. They try to stretch the analogy, and get me to hold a ball, honestly, get real. Another one is biking, I keep trying to tell them I'm a sprinter, not a trotter. And finally, the dreaded bath!!

Most embarrassing trait

It has got to be the fact that I fit under the bitch wicket, I'll tell you that's a real sore spot, Charlie just loves to rub that in.

Rawhides vs biscuits for dental calculus

A group of beagles were treated to either biscuits or rawhides in an effort to determine if they worked to decrease dental tartar. It turned out the rawhide chewers had less tartar than biscuit dogs which had less tartar than dogs getting neither. Rawhide chewers had removed an average of 63% of the calculus from some teeth and 32.5% of other teeth. The rawhides were also found to be safe with no complications found in dogs. The regimen was three rawhide chews a day or three biscuits for 3 weeks.

News Alert

Just saw an announcement about the danger of dog's consuming that kitty litter that clumps together for easy removal. Apparently, it can cause digestive problems in the dog, as it absorbs moisture.

CONDITIONING YOUR DOG FOR ATHLETICS (A Timely subject)

Doug and Mary Beth Arthur

Physical conditioning is one of the most important ingredients for success in racing or coursing. Assuming you have a Whippet that is properly trained and schooled, how do you condition it to reach its maximum potential? Realistically, it is not possible to convert a grade C racer into a grade A performer, but it certainly is possible to make your dog more competitive with proper conditioning methods.

There are similarities between conditioning a human athlete and conditioning a Whippet. In each case, a degree of discipline centered around a training schedule is required. A training schedule will consist of a combination of aerobic (with oxygen) and anaerobic (without oxygen) exercise. In preparing a Whippet to race a distance of 200 yards, it is important that it have at least a weekly 200 yard sprint (anaerobic) or "schooling" chase after a lure. However, the majority of conditioning should be walking with some free exercise (aerobic and anaerobic). The important point to remember is that the active whippet athlete should have daily exercise. It has been found that human muscles begin to atrophy after 96 hours of inactivity (i.e. "if you do not use it, you lose it"). Whippets are no different. If you have the time, energy and ambition the following weekly training schedule is recommended to keep your Whippet "tournament ready":

Monday through Saturday-one half hour walk roughly equivalent to 5 miles
Sunday-Sprint 200 yards out of box after lure (repeat after rest period)

the time of year can dictate certain changes to a training schedule. In the spring, after a long winter lay-off, we will increase sprinting frequency to twice per week to build up the heart and lung capacity. During Wisconsin's hot and humid summer months we found that the length of walking sessions must be shortened and restricted to the coolest time of

the day (dawn or dusk). Also, 2-3 days rest prior to race day is important for maximum performance. Likewise, 2-3 days rest following the race meet is necessary to rest sore muscles. If you have ever run in competition, you can appreciate the importance of this rest both physically and mentally.

It is unwise to run your Whippet twelve months out of the year, as a dog needs to be spelled occasionally to maintain a competitive edge. Depending on geographic location and dates of events, male Whippets can be spelled periodically at the owner's discretion. However, the owner of an intact bitch does not have that option. Whippet bitches come in season every 6-12 months. Her actual season lasts only about 4 weeks, but she will lose form after being in season. With careful and patient conditioning she will reach her previous form in about 3 months. It is probably not wise to sprint a female experiencing a false pregnancy following a season. Walking, however, is important. An interesting phenomenon to observe is that a bitch will produce her best form just prior to coming into season.

In closing, it is interesting to note that an important by-product of a daily conditioning program is prevention of injury. Aerobic exercise requires little stress on the Whippet but considerably reduces the frequency of lameness and muscle cramps. Remember, to have your whippets ready for competition necessitates some work on your part. Stick to a common sense conditioning program of walking and sprinting, with periodic spelling to keep your little athlete fresh.

Good luck.

Diseases you can get from your dog (zoonoses)

Direct contact

A. Ringworm

Ringworm can be transferred from both dogs and cats to human by direct contact. 30% of U.S. human ringworm cases come from dogs. The fungus that causes ringworm is similar to the one that causes athlete's foot, and it invades the skin surface of the host. Dogs or cats may or may not show signs of ringworm, cats especially can harbor the fungus without any adverse effects. When signs are shown, the dog or cat loses hair in circular regions and has redness, itchiness and crusting on the skin. The same types of signs occur in humans. To diagnose the problem a special light can be used which will cause many types of ringworm to fluoresce, but the best diagnosis is by culturing the fungus.

B. Allergies

6% of allergies treated by allergists in the U.S. are animal-related. Many people with asthma are positive on skin tests to animals and yet 37% of them still keep pets!

C. Cutaneous larvae migrans

The larvae of hookworms of dogs can penetrate intact human or dog/cat skin and in humans will cause itching and red areas on the skin and can migrate thru the skin for months. Usually people walking barefoot get infested by walking in areas where infected dogs have defecated.

Parasites/Insects

A. Tapeworms

Most tapeworms of dogs are not transmitted to humans by the segments which are released but by the ingestion of fleas which carry a stage of the lifecycle of the tapeworm. The ingested flea with the tapeworm larvae are ingested by the human, and the tapeworm can mature and the human may pass segments. This occurs much more commonly in children (maybe they eat more fleas than adult humans).

B. Heartworm

Mosquitoes are the intermediate host for the heartworm organism, and when infected mosquitoes bite humans the larvae can migrate to the lung, and appear to be a tumor on x-ray. They don't mature in the heart of humans and usually don't cause a problem, unless picked up on x-rays.

C. Fleas

Individuals may be sensitive to flea bites and fleas can carry disease and tapeworm stage, so it is best to control fleas hopefully by not letting them get into your home.

D. Ticks

Ticks can attach to humans when dogs/cats bring them home, and humans can be exposed to tick-carried diseases from the attachment or from removal of ticks from the dog. Ticks should be removed from dogs immediately if found, and that can prevent many diseases from being transmitted. However, the tick that causes Lyme disease is as small as a period on a page, and therefore would not be found easily.

E. Scabies

Scabies is caused by a mite which can be transmitted to humans by direct contact with an infected pet or by contact with areas it has been in. In pets, it occurs on the ears, face, limbs and chest, and causes scratching and crusting. It is hard to diagnose as the mite cannot always be found on skin scrapings, but the location of troubled areas is characteristic of the disease.

Fecal-oral transmission

A. Visceral larvae migrans

Visceral larvae migrans occurs when the larvae of dog or cat roundworms migrate through the organs of a human. This can occur when children are in contact with areas where infected dogs have defecated and eat the soil around the area. The larvae will migrate around the body, and in some cases to the eye, where it resembles an eye tumor, and the eye may be removed by a physician. It was found that in the 1970's half of all eyes removed in children in one ophthalmology clinic actually had roundworm larvae in them, and did not have cancer.

Jokes for the month

A man from Dallas owned a pit bull who did not want to go on walks. He would sit back and brace himself so that the owner could only go on by dragging him on the leash. The owner finally stopped when he realized he was creating a bottomless pit.

A saying seen on a baseball cap, Friends don't let friends drive Fords.

I heard this rumor that everyone (or almost everyone) in the state north of Illinois were cheddarheads or cheese brains??? Is this true?

Boasts, Brags and BLOOPERS

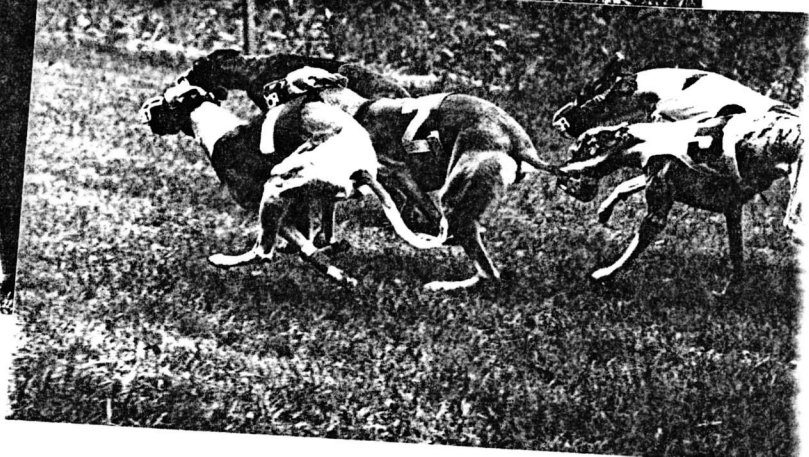
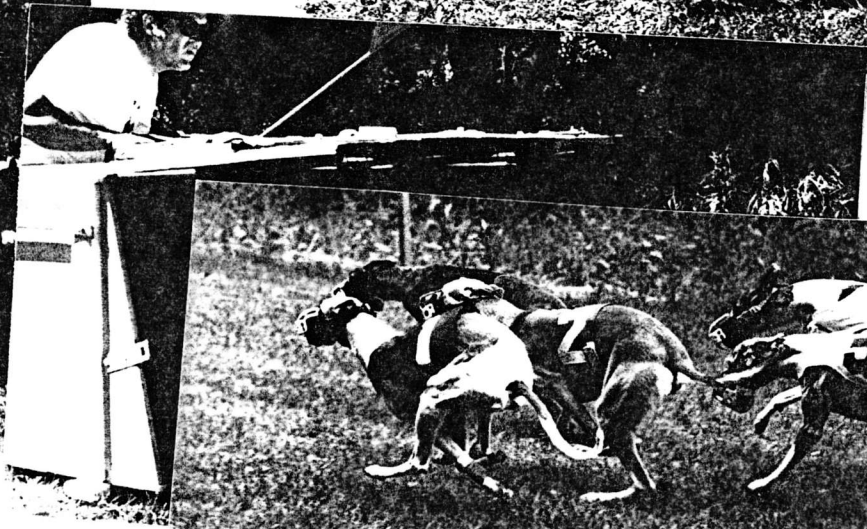
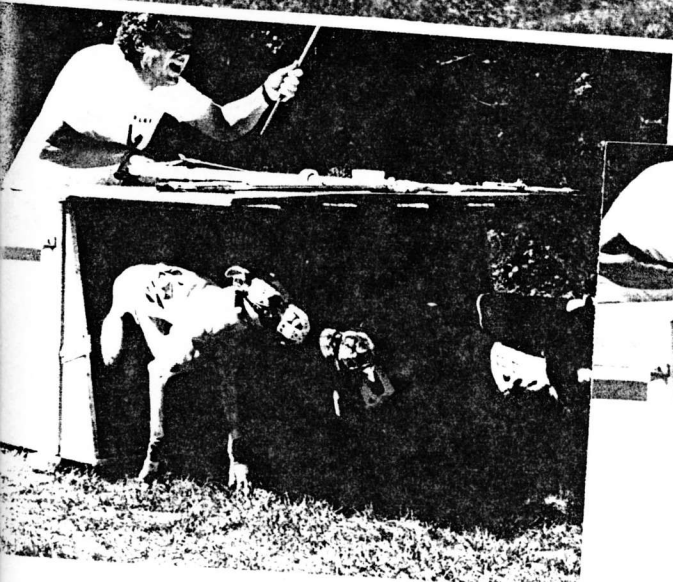
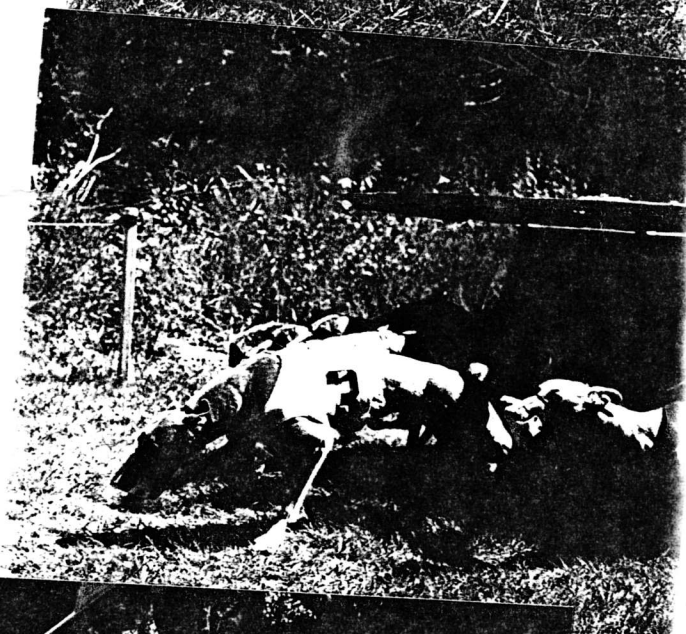
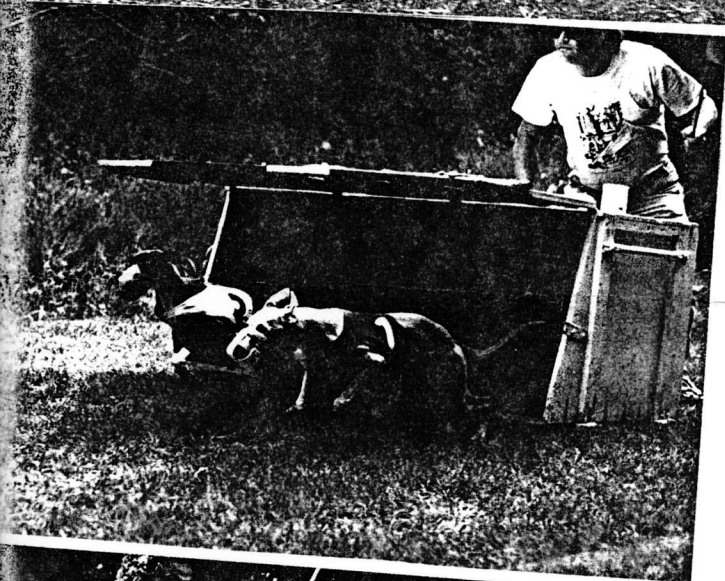
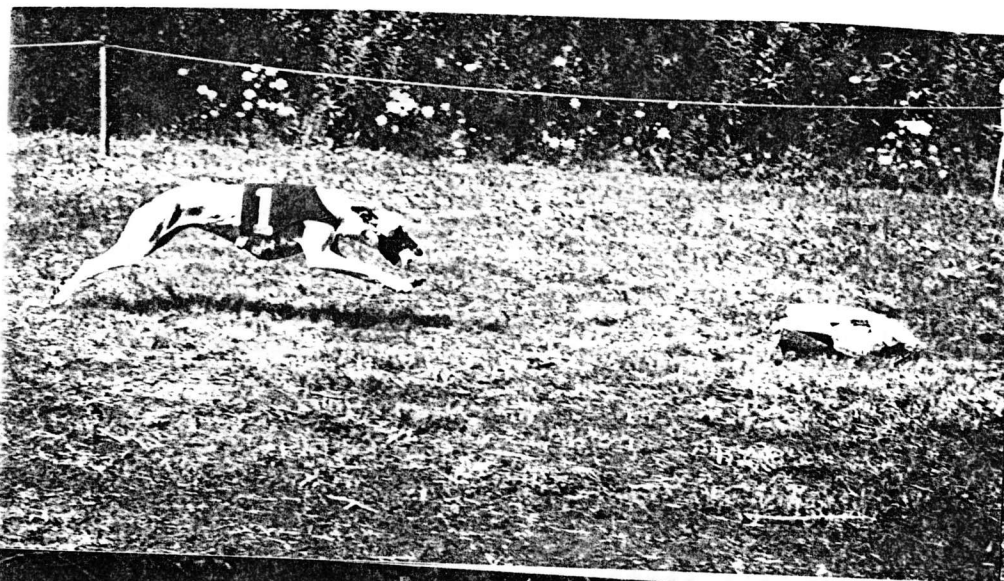
From C. Curik & L. Wittman

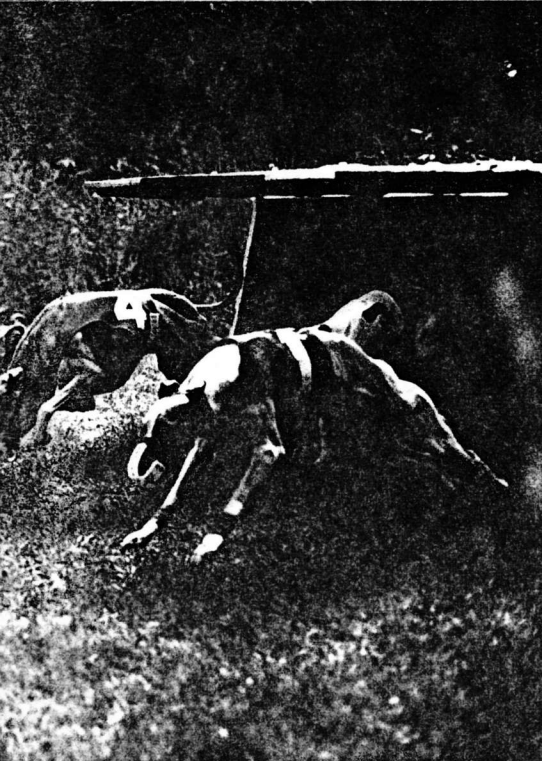
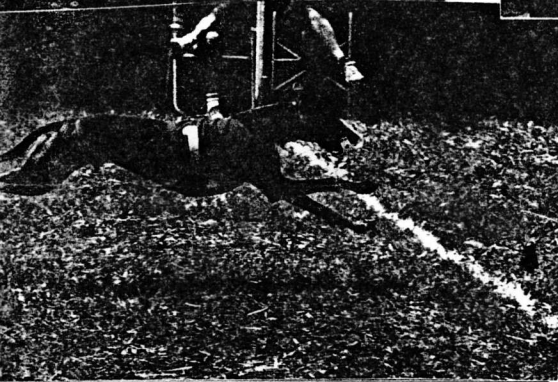
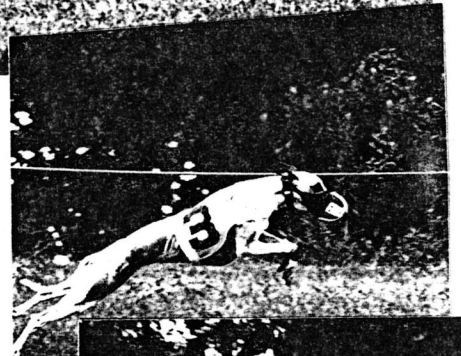
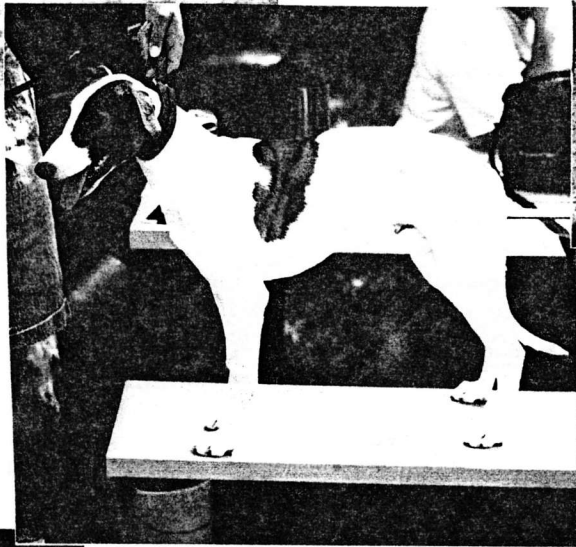
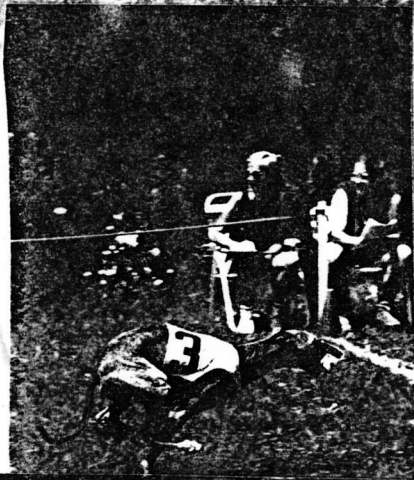
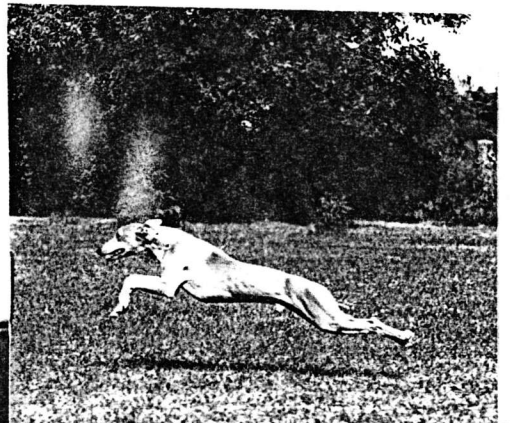
Kelly got her second novice leg March 8, 1992 at Moberly Missouri, also winning "High Scoring Sighthound". On March 15, 1992, she finished her CD at Louisville, Kentucky. Penny, the eager beagle, got "High Scoring Beagle" at Louisville on March 14, 1992 competing in Open B.

From Connie & Ule

Mighty Mite got his first leg towards a CD title on April 4 in Anderson Indiana. He also received the High Scoring Hound prize by soundly defeating Charlie, who definitely would have gotten a blooper prize if it was available. At the National Specialty Charlie and Mighty Mite placed second in the brace competition and Mighty Mite got a second leg towards his CD by placing fourth in Novice B. Charlie entered in Open A tried to bring the dumbbell to Ule who was sitting outside the ring, then brought it to me and spit it out at my feet. Needless to say that was only the beginning.

Scenes from last year. Part I.





Line and Lure

Connie Austin & Ule James
1905 Alton Drive
Champaign, Illinois 61821

